

CERTIFICATE OF LOCATION OF GOVERNMENT CORNER

NORTH 1/4 Corner of Section 14, Township 106N, Range 43W, 5TH P.M.

STATE OF MINNESOTA, County of MURRAY

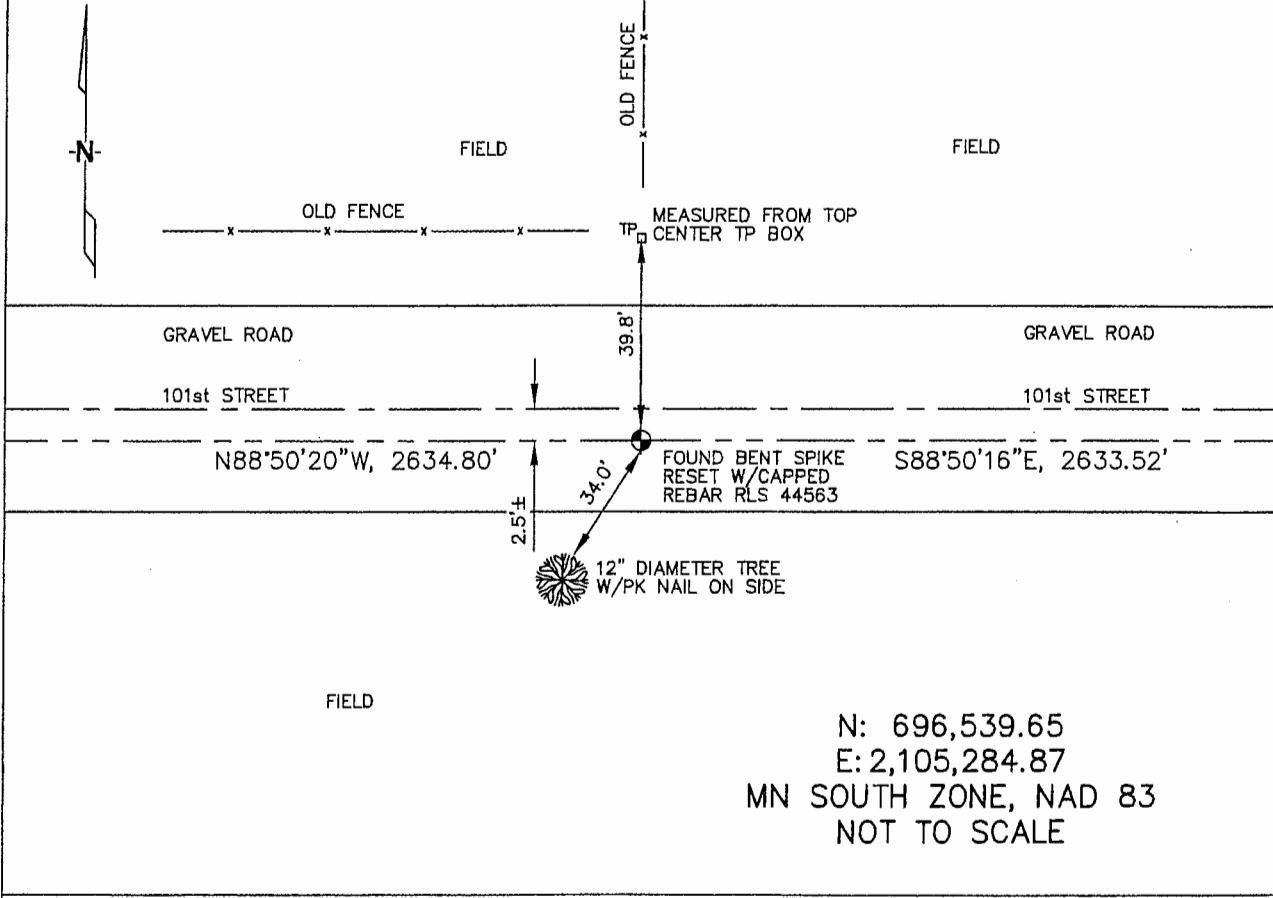
At the corner location shown on the sketch :

On 3/22/2006 found BENT SPIKE IN GRAVEL ROAD.

left monument as found, lowered monument, removed monument (explain)

On 3/22/2006 set 5/8" REBAR WITH CAP: RLS 44563. AS THE REPLACEMENT.

Sketch of reference ties



N: 696,539.65
E: 2,105,284.87
MN SOUTH ZONE, NAD 83
NOT TO SCALE

Statement of evidence relative to this corner location is on back page

I hereby certify that this document and the data contained herein was prepared by me or under my direct supervision.

Thomas V. Zeff

Thomas V. Zeff Date 6/28/06

Registration No. 44563
 Land Surveyor, Professional Engineer
 County Surveyor, County Engineer

OFFICE OF THE COUNTY RECORDER
County of _____

SEP 28 2006

I hereby certify that this document was filed in the Co. Recorders office at _____ .M. on the day of _____ A.D., 20

County Recorder Jama V. Johnson
By _____, Deputy

DOCUMENT NO. _____

STATEMENT OF EVIDENCE:

NORTH 1/4 CORNER, SECTION 14, T. 106 N., R. 43 W.,
MURRAY COUNTY, MINNESOTA

- 1866 J.W. Bishop, US. Deputy Surveyor, monumented corner.
- 10/17/1913 Murray Co. located a 6"x8"x12", gray stone, in the center of the grade. no ties.
- ? Date MN DOT R/W Map for Trunk Highway 30, calls for the 1/4 corner to be at the intersection of the trunk highway (east-west) and fences (north & south); no ties.
- 3/22/2006 Uiteig Engineers, Inc., Survey Crew, Dennis Lavallie Party Chief, found a bent spike in the gravel road. Replaced same with a 5/8" rebar with cap: RLS 44563.
Ties: N-39.8' to top, center of telephone pedestal;
SW-34.0' to PK nail in 12" diameter, deciduous tree;
E-2633.52' to NE corner, Section 14;
W-2634.80' to NW corner, Section 14.